

**ITEM 21. ITEM FOR COMMITTEE INFORMATION – TRAFFIC TREATMENT –
ELIZABETH STREET FROM PARK TO MARKET STREETS
SYDNEY**

TRIM RECORD NO: 2014/563817

RECOMMENDATION

It is recommended that the Committee note the following:

- (A) Reallocation of kerb space on the western side of Elizabeth Street between the points 11.7 metres and 34.5 metres north of Park Street as “No Stopping”;
- (B) Reallocation of kerb space on the western side of Elizabeth Street between the points 34.5 metres and 58.9 metres north of Park Street as “No Stopping 6am-10am, 3pm-8pm Mon-Fri”, “Loading Zone Ticket 10am-3pm Mon-Fri, Sat 6am-10am” and “4P Ticket 6pm-12am Mon-Fri, 10am-10pm Sat, 8am-10pm Sun & Public Holidays”;
- (C) Reallocation of kerb space on the western side of Elizabeth Street between the points 71.2 metres and 136.7 metres north of Park Street as “Bus Zone”;
- (D) Reallocation of kerb space on the western side of Elizabeth Street between the points 136.7 metres and 189.2 metres north of Park Street as “No Stopping 6am-10am, 3pm-8pm Mon-Fri”, “No Parking At Other Times”;
- (E) Reallocation of kerb space on the western side of Elizabeth Street between the points 189.2 metres and 232 metres south of King Street as “No Stopping”;
- (F) Reallocation of kerb space on the eastern side of Elizabeth Street between the points 202.3 metres and 213.9 metres south of King Street as “No Stopping 6am-10am, 3pm-8pm Mon-Fri”, “Loading Zone Ticket 10am-3pm Mon-Fri, Sat 6am-10am” and “4P Ticket 6pm-12am Mon-Fri, 10am-10pm Sat, 8am-10pm Sun & Public Holidays”;
- (G) Reallocation of kerb space on the eastern side of Elizabeth Street between the points 306.2 metres and 369.3 metres south of King Street as “No Stopping 6am-10am, 3pm-8pm Mon-Fri”, “Loading Zone Ticket 10am-3pm Mon-Fri, Sat 6am-10am” and “4P Ticket 6pm-12am Mon-Fri, 10am-10pm Sat, 8am-10pm Sun & Public Holidays”;
- (H) Reallocation of kerb space on the eastern side of Elizabeth Street between the points 369.3 metres and 422 metres south of King Street as “Bus Zone”; and
- (I) Installation of kerb amendments and changes to lane configuration in Elizabeth Street between Park and Market Streets to provide for the installation of the bus lanes.

DECISION

BACKGROUND

On 19 December 2013, the NSW Government adopted the Sydney City Centre Access Strategy (Access Strategy). The Access Strategy will deliver a fully integrated transport network in Sydney's City Centre that puts the customer first and meets the growing transport task. It will mean more people use public transport to access the City Centre and it will change the way people move around within it.

The Access Strategy considers all transport modes and demonstrates how light rail, buses, trains, ferries, cars, taxis, pedestrians and cyclists will interact in the heart of Sydney. The Access Strategy also provides a clear direction for how all the different transport modes will work together in the Sydney CBD to reduce congestion, provide for future growth and improve the customer experience.

The Sydney City Centre Bus Plan (SCCBP) forms part of a suite of transport improvements associated with the Access Strategy and includes:

- New dedicated Bus Lanes, Bus Stops and shelters;
- Modifying kerbs and footpaths, line markings and medians; and
- Removing and relocating some taxi ranks, Loading Zones and on-street parking spaces.

The SCCBP aims to:

- Provide a more efficient bus network that is easier for customers to use and understand;
- Create bus corridors within the CBD that improve links to key destinations and improve connectivity with other transport modes; and
- Relocate existing bus routes on George Street to enable delivery of the CBD Light Rail.

The SCCBP will be delivered by Roads and Maritime Services (RMS), in conjunction with Transport for New South Wales (TfNSW) and the City of Sydney.

COMMENTS

The kerb space on the western side of Elizabeth Street between Park and Market Streets is generally signposted as "Bus Zone". A Bus Lane currently operates on the western side of Elizabeth Street between 8am-10am, 3pm-6pm Mon-Fri.

Elizabeth Street between Eddy Avenue and Hunter Street is identified in the Access Strategy as a key bus corridor. The bus corridor includes "No Stopping", "Bus Zone" and "Bus Lane 6am-8pm Mon-Fri 10am-6pm Sat".

Where possible, loading, taxi and parking for people with disabilities will be distributed to neighbouring streets, contained within the proposed changes for the bus and cycleway plans.

Agreement was obtained from the RMS, the Sydney City Police and the State Member, for the proposed changes.

CONSULTATION

The RMS publically exhibited the Review of Environmental Factors (REF) from 23 June to 25 July 2014. Notification of the REF included a letterbox drop to 36,000 properties, a dedicated website, a drop-in centre and visits and meetings with 200 stakeholders within the affected area.

Of the 36,000 letters distributed, the RMS received 60 submissions. Of these 17 supported the proposal, 31 opposed the proposal and 12 where neutral.

Submissions opposing the proposal were concerned about the loss of loading and parking spaces, increased noise and impact to business.

Submissions supporting the proposal believed the proposal would improve public transport access to the City and reduce general traffic congestion.

Included in the consultation process, meetings were held with individual stakeholders who raised concerns about the proposals. The proposal was amended based on these concerns to better meet the needs of the community within the allowable scope of the project objectives.

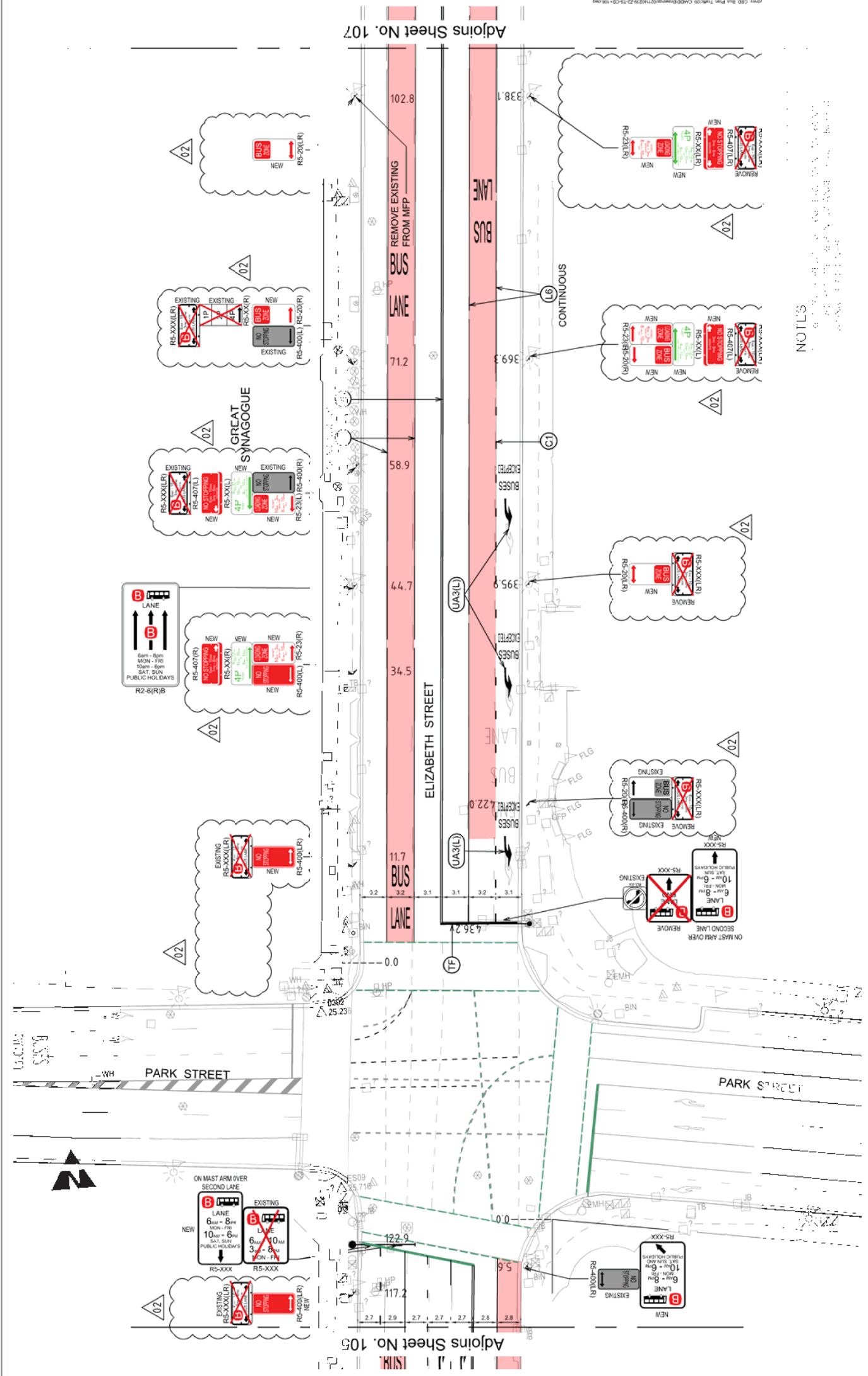
FINANCIAL

The SCCBP is being fully funded by the NSW State Government.

ATTACHMENTS

Item for Committee Information – Traffic Treatment – Elizabeth Street from Park to Market Streets Sydney

Stephen Sherwin, Project Manager – Roads and Maritime Services



NOTES

Adjoins Sheet No. 107

Adjoins Sheet No. 105

DATE	17/08/2014
PROJECT	TRAFFIC SIGNAGE PLAN
CLIENT	ELIZABETH STREET
SHEET	SHEET 7 OF 17
DESIGNED BY	TRAC
CHECKED BY	TRAC
DATE	28/08/2014
SCALE	AS SHOWN
PROJECT NO.	722-TS-GD-106
DRAWN BY	TRAC
CHECKED BY	TRAC
DATE	17/08/2014



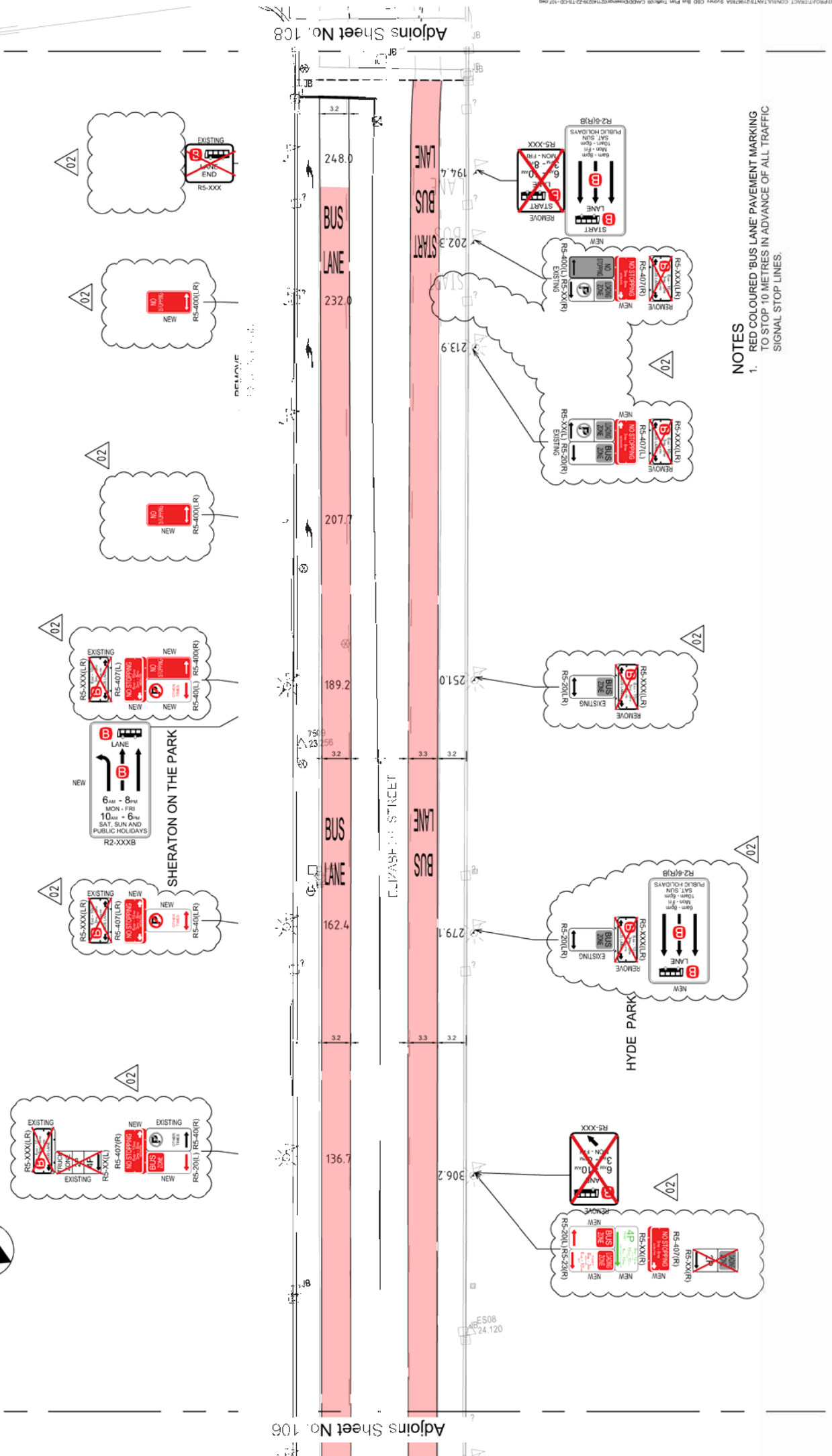
landscape architects
planners & engineers
Sydney City Centre
BUS INFRASTRUCTURE



PARSONS BRINCKERHOFF
Level 27, Citicorp Centre
888 George Street
Sydney NSW 2000
Telephone +61 2 9222 5500
Facsimile +61 2 9222 5100
Email parsonsb@parsonsb.com.au

NO.	DATE	DESCRIPTION
1	17/08/2014	ISSUED FOR CONSTRUCTION
2	17/08/2014	ISSUED FOR CONSTRUCTION
3	17/08/2014	ISSUED FOR CONSTRUCTION

These drawings, plans and specifications and the copyright therein are the property of TRAC CONSULTANTS PTY. LTD. and may not be used, reproduced or copied, wholly or in part, without the written permission of TRAC CONSULTANTS PTY. LTD.



NOTES
 1. RED COLOURED 'BUS LANE' PAVEMENT MARKING TO STOP 10 METRES IN ADVANCE OF ALL TRAFFIC SIGNAL STOP LINES.

NO.	DATE	BY	FOR
01	28/08/2014	R.W.	FOR
02			

TRAFFIC SIGNAGE PLAN
ELIZABETH STREET
SHEET 8 OF 12

Project No: 10000000000000000000
 Date: 28/08/2014
 A.D. R.W.
 Scale: 1:100 (2:1)

Tract

landscape architects
 planners & engineers

15/00/00000000000000000000
 15/00/00000000000000000000
 15/00/00000000000000000000

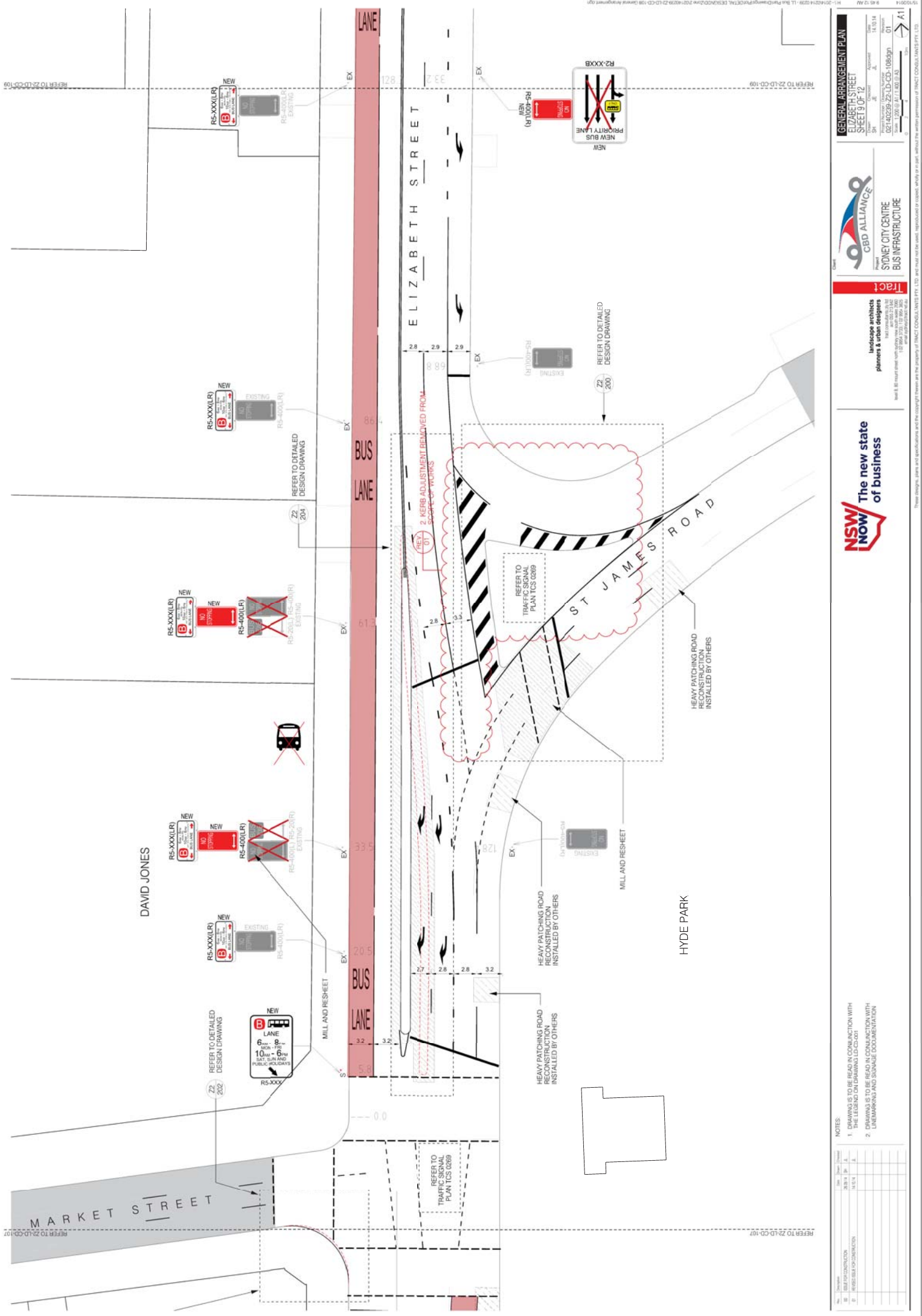
NSW NOW
 The new state of business

PARSONS BRINCKERHOFF

Level 27, Citicorp Centre
 800 George Street
 Sydney NSW 2000
 Telephone: +61 2 9222 5100
 Facsimile: +61 2 9222 5100
 Email: parsons@parsons.com.au

NO.	DATE	BY	FOR
01	28/08/2014	R.W.	FOR
02			

These drawings, plans and specifications and the copyright therein are the property of TRACT CONSULTANTS PTY. LTD. and must not be used, reproduced or copied, wholly or in part, without the written permission of TRACT CONSULTANTS PTY. LTD.



REFER TO Z2-LD-CD-109

REFER TO Z2-LD-CD-109

REFER TO Z2-LD-CD-107

REFER TO Z2-LD-CD-107

GENERAL ARRANGEMENT PLAN
 ELIZABETH STREET
 SHEET 9 OF 12

Project No.	2017-10-001
Scale	1:200
Author	14.10.14
Check	14.10.14
Drawn	14.10.14
Scale	1:200
Sheet No.	9 OF 12



landscape architects
 planners & urban designers
tract
 11/111 Pitt Street Sydney NSW 2000
 Tel: (02) 9251 3333
 Fax: (02) 9251 3334
 Email: &@tract.com.au



NOTES

- DRAWING IS TO BE READ IN CONJUNCTION WITH THE LEGEND ON DRAWING LD-CD-001
- DRAWING IS TO BE READ IN CONJUNCTION WITH LINEMARKING AND SIGNAGE DOCUMENTATION

Rev	Description	Date	By	Check
1	ISSUE FOR TENDER	28.11.14	JP	A
2	REVISED FOR CONTRACT	14.10.14	A	A

These drawings, plans and specifications and the copyright therein are the property of TRACT CONSULTANTS PTY. LTD. and may not be used, reproduced or copied, wholly or in part, without the written permission of TRACT CONSULTANTS PTY. LTD.